

Extreme flooding in the Vesdre valley in July 2021

Support to disaster risk management in Belgium by the Extremes Digital Twin



A natural disaster that resulted in a human tragedy

 39 lives lost

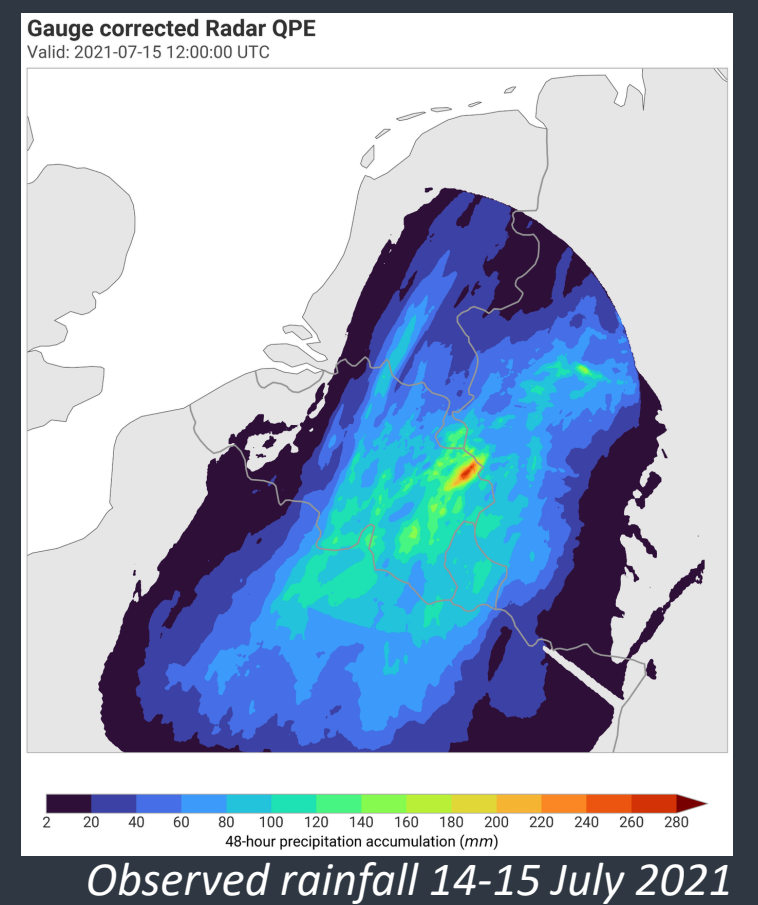
 billions in damages

 >3 years of recovery effort

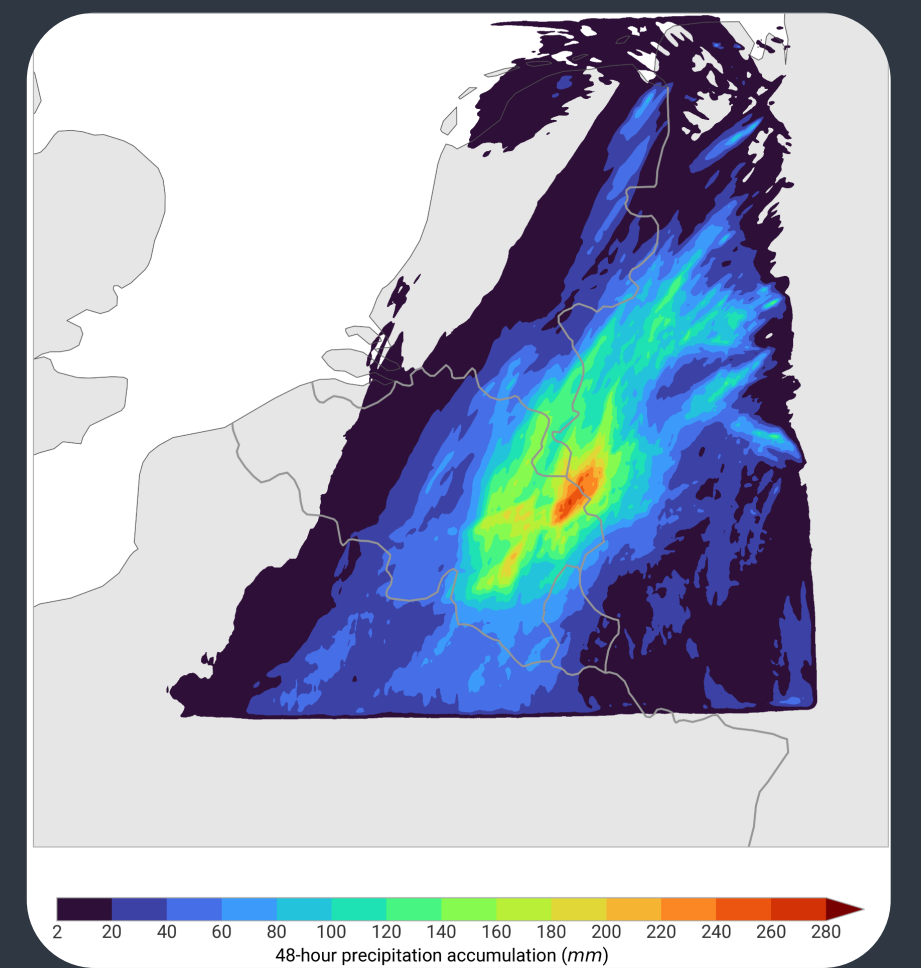
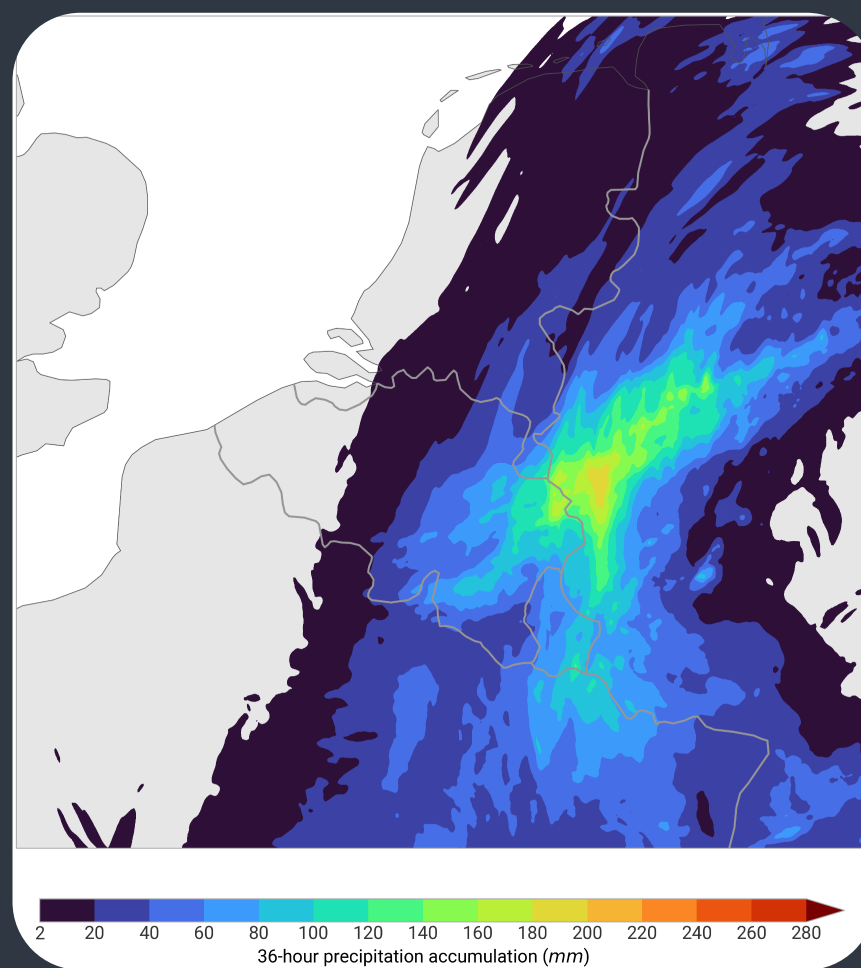
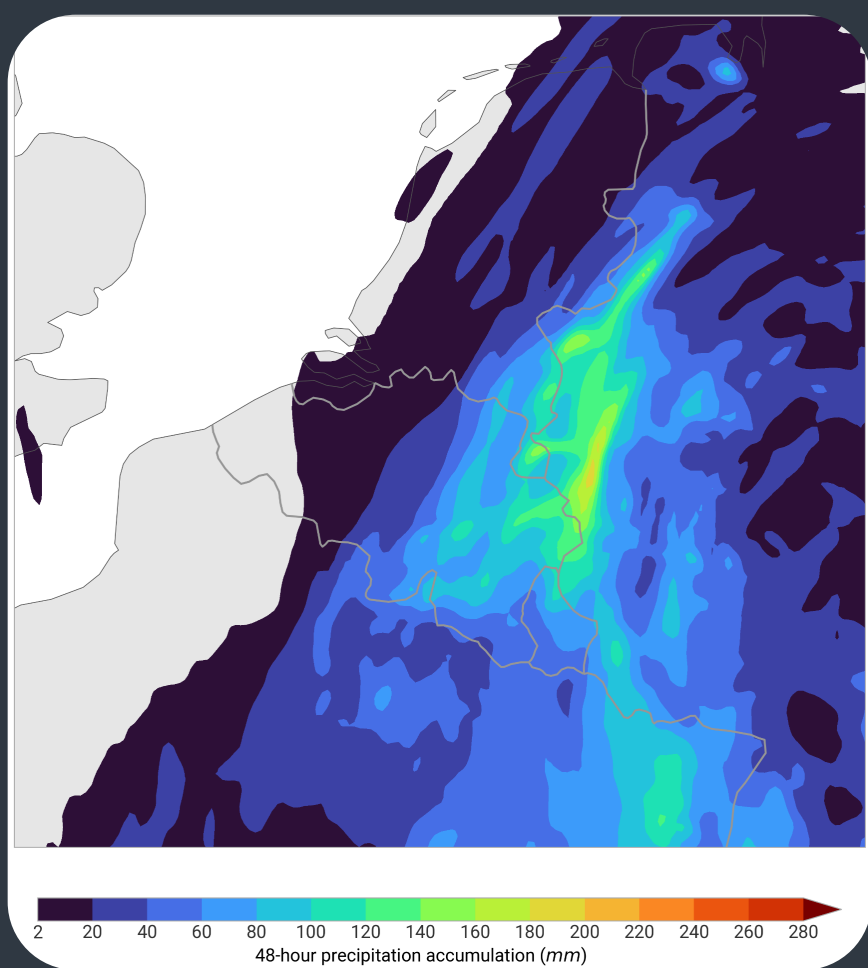
RMI issued a red alert for heavy rainfall

“During this crisis, the Royal Meteorological Institute issued a red alert. This warning was grounded in the best science and technology available at the time, drawing on numerical forecasts from ECMWF combined with high-resolution limited-area models developed in collaboration with national meteorological services across Europe.”

Prof. dr. David Dehenauw,
Head of Forecasting, RMI



Destination Earth Extremes Digital Twin: the power of higher resolution



Operational ALARO 4 km



Operational ALARO 1.3 km



DestinE Digital Twin 500m